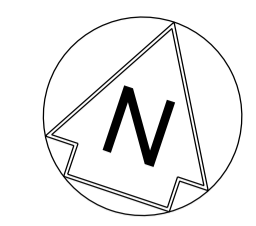
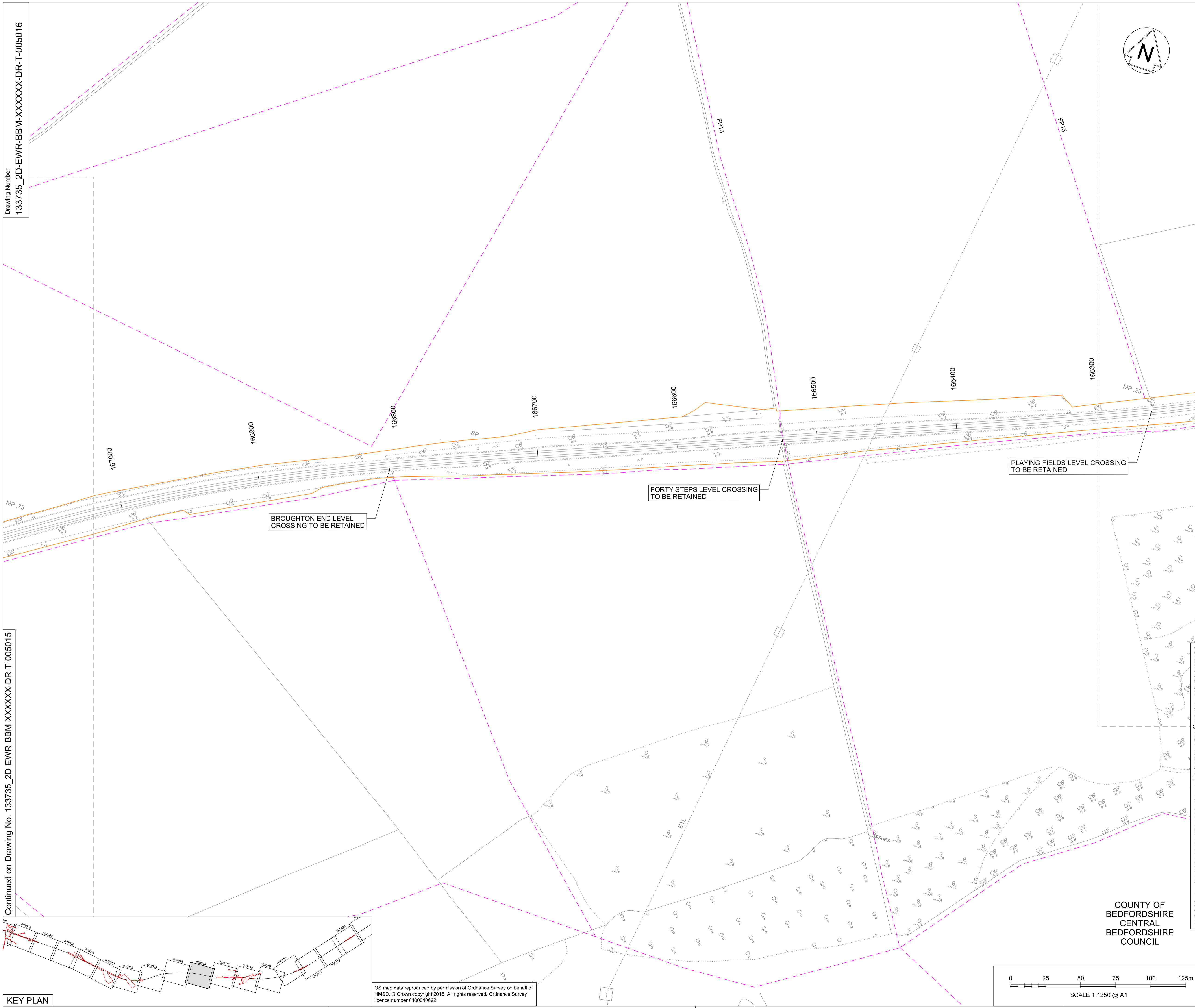


Drawing Number
133735_2D-EWR-BBM-XXXXXX-DR-T-005016

Continued on Drawing No. 133735_2D-EWR-BBM-XXXXXX-DR-T-005015



NETWORK RAIL (EAST WEST
RAIL WESTERN SECTION
PHASE 2) ORDER

KEY

- EXISTING NETWORK RAIL BOUNDARY
- EXTENT OF OVERLAP WITH ADJACENT SHEET
- EXISTING FOOTPATH

Rev	Date	Description of Revisions	Desd	Chkd	Appr
A01	17/12/17	Approved for Consultation		S.M.	P.P.

Status: **Accepted for Outline Design** Suitability: **A4**



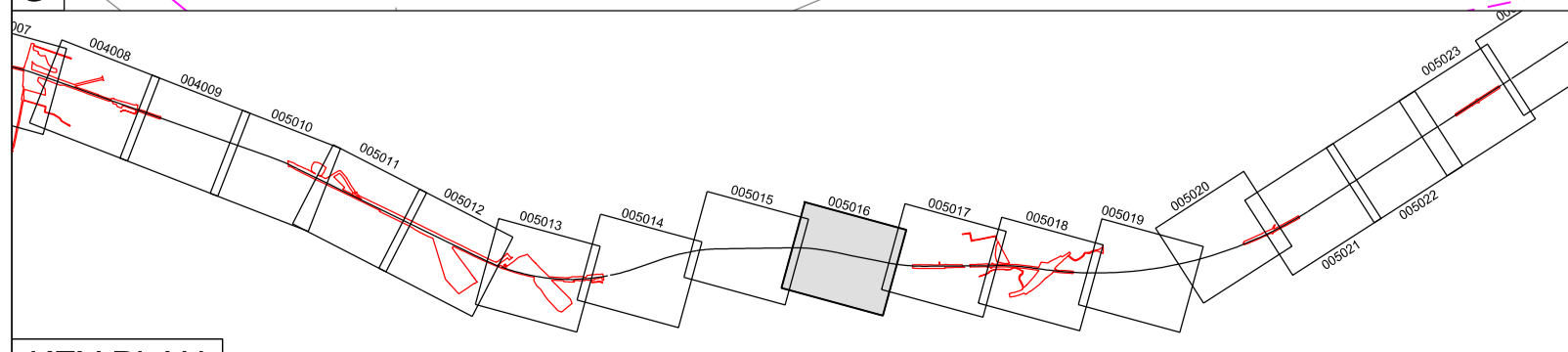
Continued on Drawing No. 133735_2D-EWR-BBM-XXXXXX-DR-T-005017

Project: **East West Rail (Western Section) Phase 2**

Drawing Title: **Scheme Drawing Bletchley to Bedford**

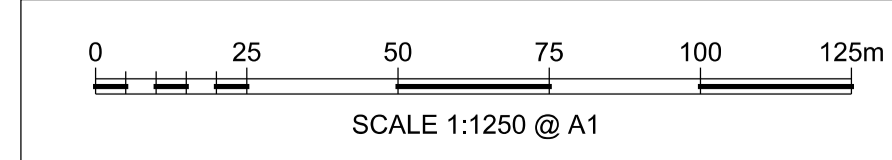
Designed	Sam McLelland	Signed	S. McLelland	Date	17/12/17
Drawn	Grace Newey	Signed	G. Newey	Date	07/12/16
Checked	Paul Panini	Signed	P. Panini	Date	17/12/17
Approved	Colin Murphy	Signed	C. Murphy	Date	17/12/17

Scale(s)	1:1250	ELR & Project Chainage	BBM - XXXXXX
Design Package Risk Classification	Normal	Sheet	61 of 127
Alternative Reference	EWR2-CEP-DRG-PBL-445016	Revision	A01
Drawing Number	133735_2D-EWR-BBM-XXXXXX-DR-T-005016		



KEY PLAN

OS map data reproduced by permission of Ordnance Survey on behalf of HMSO. © Crown copyright 2015. All rights reserved. Ordnance Survey licence number 0100040692



COUNTY OF
BEDFORDSHIRE
CENTRAL
BEDFORDSHIRE
COUNCIL