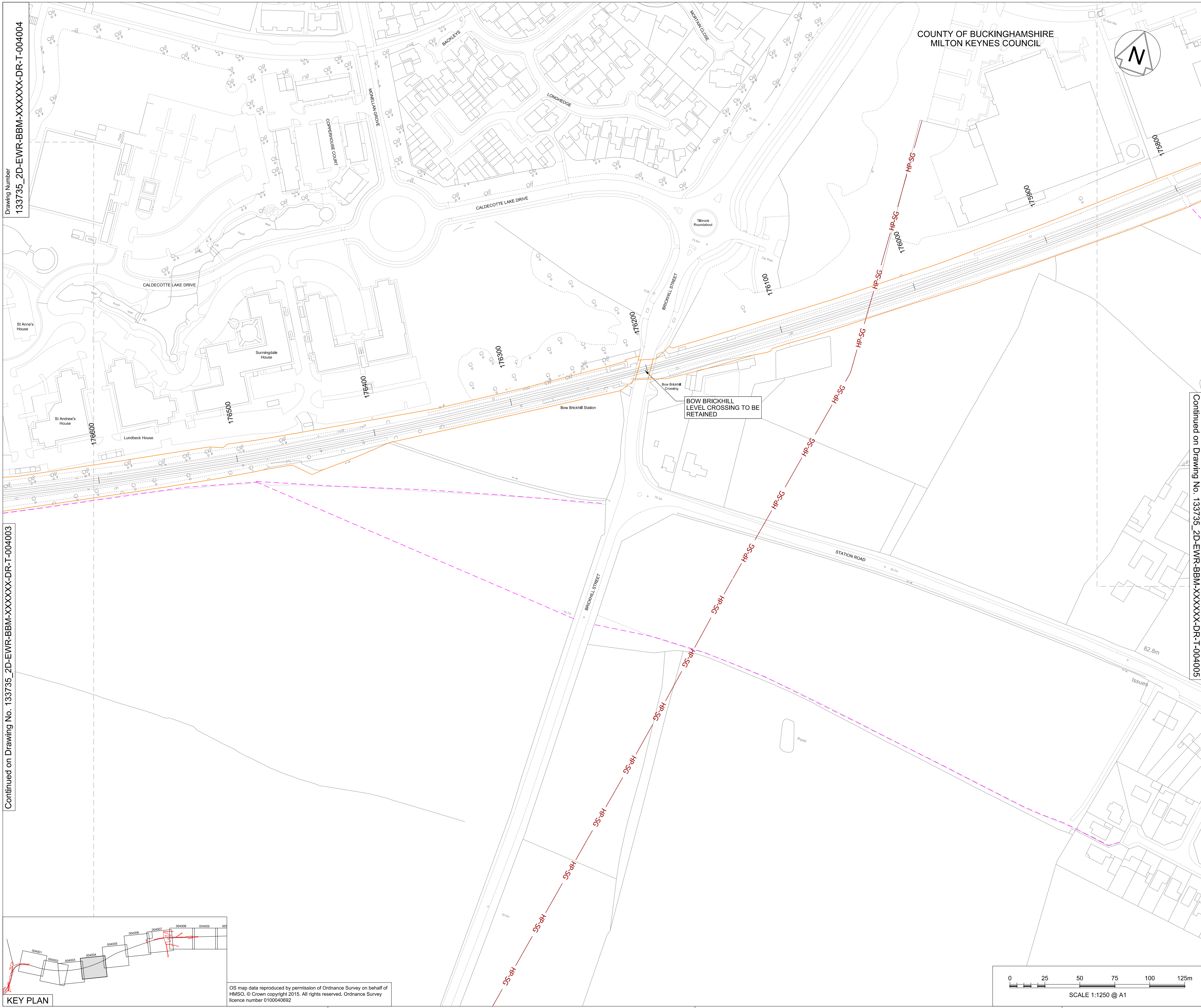


Drawing Number
133735_2D-EWR-BBM-XXXXXX-DR-T-004004

Continued on Drawing No. 133735_2D-EWR-BBM-XXXXXX-DR-T-004003



COUNTY OF BUCKINGHAMSHIRE
MILTON KEYNES COUNCIL

KEY

- EXISTING NETWORK RAIL BOUNDARY
- EXTENT OF OVERLAP WITH ADJACENT SHEET
- EXISTING FOOTPATH
- HP-SG SGN HIGH PRESSURE GAS MAIN

Rev	Date	Description of Revisions	Desd	Chkd	Appr	Status	Suitability
A01	17/12/17	Approved for Consultation				S.M.	P.P.
						C.M.	
Accepted for Outline Design							A4



Project
**East West Rail
(Western Section)
Phase 2**

Drawing Title
**Scheme Drawing
Bletchley to Bedford**

Designed	Sam McLelland	Signed	S. McLelland	Date	17/12/17
Drawn	Grace Newey	Signed	G. Newey	Date	07/12/16
Checked	Paul Panini	Signed	P. Panini	Date	17/12/17
Approved	Colin Murphy	Signed	C. Murphy	Date	17/12/17

Scale(s)
1:1250

ELR & Project Chainage
BBM - XXXXXX

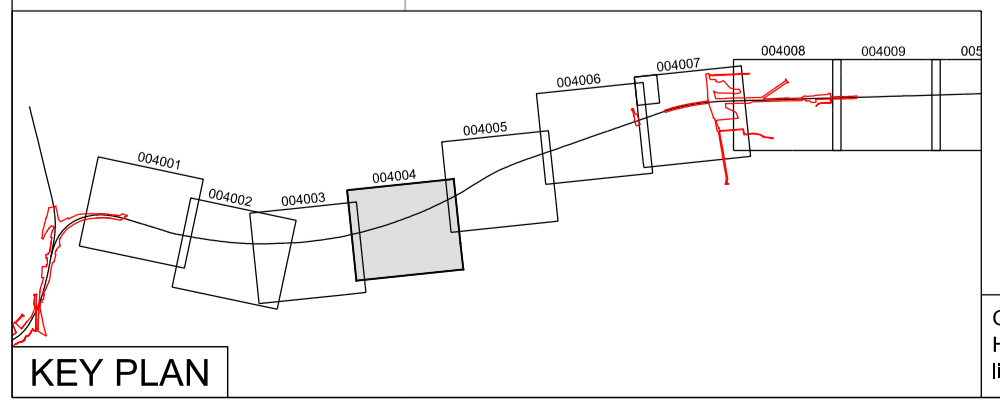
Design Package Risk Classification
Normal

Sheet
49 of 127

Alternative Reference
EWR2-CEP-DRG-PBL-444004

Drawing Number
133735_2D-EWR-BBM-XXXXXX-DR-T-004004

Revision
A01



OS map data reproduced by permission of Ordnance Survey on behalf of HMSO. © Crown copyright 2015. All rights reserved. Ordnance Survey licence number 0100040692

